

# FOOT MECHANICS PODIATRY

## DIRECTIONS FOR PARKING AT GREENLANE CLINIC

95 Ascot Avenue, Ascot Office Park, Building C, Level 3

Clinic Phone Number: 09 523 7051

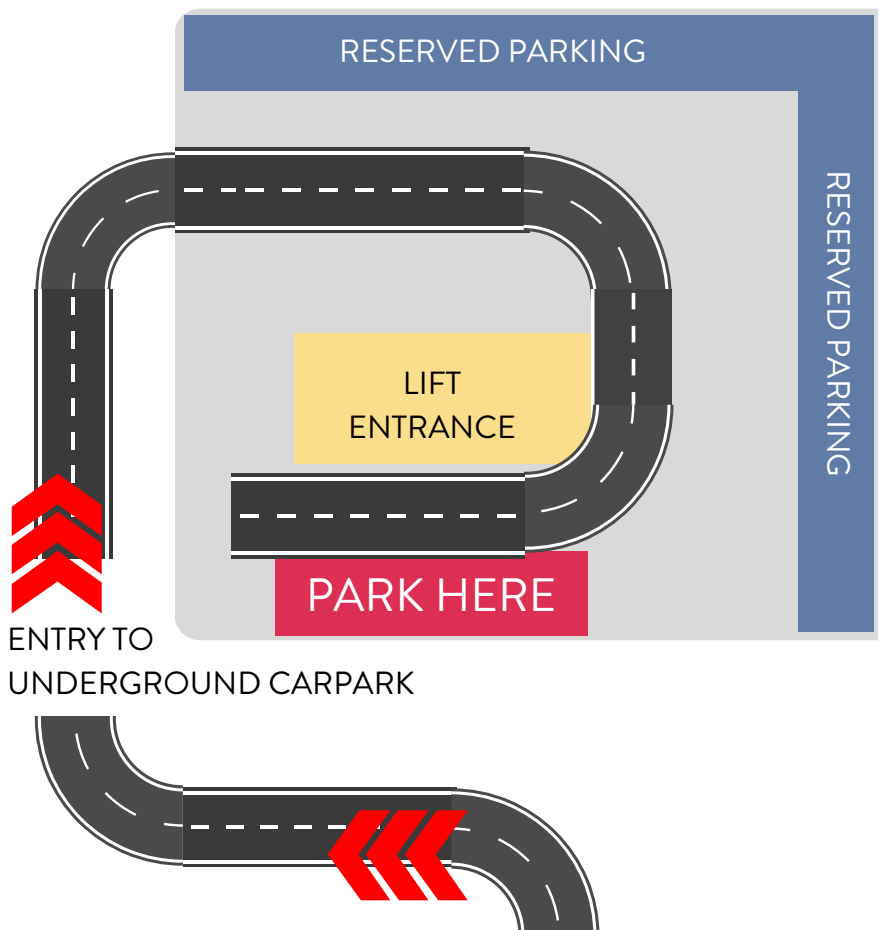


GOOGLE MAPS



SCAN ME

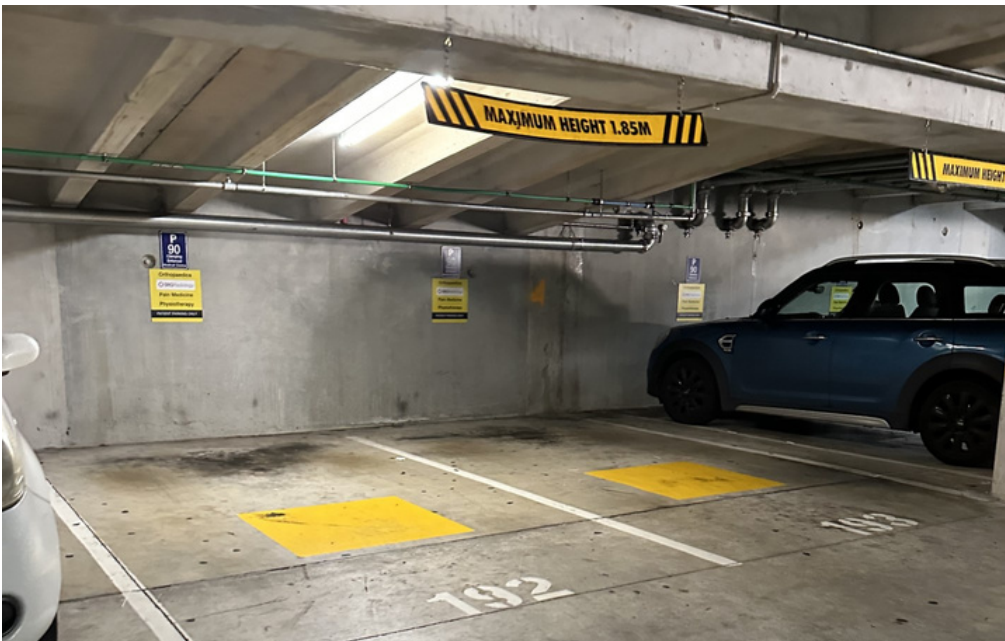
As you enter the gates, turn left and follow the road to the underground carpark (entry around the side of the building).



Please park in the carparks labelled “Orthopaedic and Radiology”. These parks are in the underground carpark. Parking is FREE.



See next page for parking lot images.



Please park in the carpark labelled “Orthopaedic and Radiology”.  
Parking is FREE.

